



## INSTRUCTIONS

Item Description: Large Planter Fountain w/Lights

Vendor Item # F50093AA

**Questions, Problems, Missing Parts? Before returning to your retailer, CALL OUR CUSTOMER SERVICE DEPARTMENT at 1 (866) 728-6187 9 a.m.– 5 p.m. EST, Monday-Friday or e-mail customerservice@srg-usa.com**

### PARTS LIST:

Part#	Description	Quantity	Part#	Description	Quantity	Part#	Description	Quantity
01.	Flower pot	1	07	Drain tube fitting	1	13	Light Cord Clip	9
02.	Wedge	1	08	Basin	1	14	Submersible Light	4
03.	LED lights	12	09	Water Pump	1	15	Drain tube	1
04.	Water Pot	1	10	Light Power Cord	1	16	LED light input cord	1
05.	Base	1	11	Transformer	1	17	Pump Water supply tube	1
06.	LED light cord w/pin	1	12	Submersible Light Holder	4	18	Socket	1

### TOOLS REQUIRED FOR ASSEMBLY:

- No tools needed for assembly.

### FOUNTAIN ASSEMBLY INSTRUCTIONS:

1. Unpack the contents of the box and check to make sure that all items are accounted for and in good condition.
2. Select a flat, level surface for the assembly and final location of your fountain.
3. The basin of the fountain will have the power cords for the pump and the lights routed through the bottom of the basin via specially designed rubber plugs. To facilitate the leveling of the fountain a notch has been designed on the bottom surface of the basin to allow the power cord for the pump and the lights to be routed from underneath the basin. Place the basin in the selected location with the power cords routed through the notch.
4. Place each of the four lights into the basin in the indented areas. The lights should fit firmly. Secure the light cords into the clips provided on the basin.
5. Position the pedestal base (item #5) on the surface of the basin as shown. Make sure that the base fits into the corners provided. Make sure that the pump is positioned within the hole in the center of the base.
6. Position the water pot above the base and connect the water supply tube extending from the bottom of the water pot to the outlet on the pump. Connect the drain tube to the fitting on the basin, and connect the light cord to the plug in the basin. Finally connect the water pot to the base by mating the two pieces and turning the water pot in a clockwise direction to lock it into place.
7. Connect the flower pot to the water pot by mating the two pieces and turning the flower pot in a clockwise direction to lock it into place.
8. Fill the basin with clean water. The water level should be within 2" from the top of the basin.
9. Connect the low voltage power cord to the transformer. Locate the transformer in a clean dry area. Plug the power cords from the transformer and the pump into a properly grounded, grounding type receptacle.
10. After the initial setup, observe the flow of the water over the rim of the Water Pot. An adjustment of the Base may be necessary to create an even flow around the rim of the Water Pot.
11. To eliminate the possibility of water damage to areas around your fountain, check for leaks and excessive splashing after the initial setup of your fountain. It is highly recommended that this fountain be placed in an area that will not be damaged should the area come in contact with liquid.
12. Do not leave your fountain running for extended periods of time when no one is present to observe the performance.
13. Check the area around your fountain on a regular basis to ensure that there is no leakage.

### MAINTENANCE OF YOUR FOUNTAIN:

1. Keep water clean - using clean water will reduce mineral deposits and improve water clarity.
2. Clean the fountain periodically to prevent mineral deposits and contamination. Use warm soapy water and a stiff brush for heavily stained surfaces. **Do not use harsh chemicals as this will damage the finished surface and void the warranty.**
3. Add clean water periodically to ensure that the pump is fully submersed in water.
4. Disconnect the power and empty the basin if the fountain will not be used for an extended time.
5. If installed outdoors and in a freeze-area of the country, ensure that all water is removed and the unit is completely dry. **This product is NOT to be operated below 41°F (5°C) freeze damage may occur.**

### PUMP INSTRUCTIONS:



### SPECIAL WARNINGS & CAUTIONS:

#### WARNINGS:

1. To reduce the risk of electric shock, connect only to a properly grounded, grounding type receptacle.
2. Do not exceed the voltage shown on the pump.
3. Always disconnect the pump from the power source prior to beginning any maintenance or work on the pump or fountain.
4. Inspect the power cord for damage before installation and/or maintenance. Replace the entire pump if damage is found.
5. For pumps with a 3-prong, grounded type plug, do not remove the grounding pin from the plug on the power cord.

#### CAUTIONS:

1. The fountain shall not be installed within 10 feet (3.05m) of a pool or spa. When the pump is connected to a GFCI protected circuit, the fountain unit has the option of being installed no less than 5 feet (1.52m) from a pool or spa.
2. Use only with portable, self contained fountains no larger than 5' in any direction.
3. Use a proper power source as indicated on the pump label. Keep the cord away from high temperature and/or heat sources.
4. Do not lift the pump by its power cord.
5. Keep the fountain out of reach of children.
6. Do not let the pump run dry. Pump must be completely submerged for proper operation and cooling.
7. Do not pump heated liquids.
8. Operate in freshwater only. Avoid heavily chlorinated water and water with high PH levels.

### PUMP ASSEMBLY INSTRUCTIONS:

1. Remove the pump from the package and untie the power cord.
2. Place the pump in the desired location in your pond or fountain ensuring that it is completely submerged in the water. If the pump is to be used in a pond, raise the pump off of the pond floor to ensure that it is above any dirt that will collect as this will adversely affect the performance of the pump.
3. Adjust the flow rate (if applicable) to the maximum (+) position.
4. If there is a light included with the fountain, connect the low voltage power cord from the light to the pump.
5. Connect the low voltage power cord from the pump to the transformer. Place the transformer in a clean, dry area.
6. Connect the power cord from the transformer to a properly grounded, grounding type receptacle (GFCI).
7. If necessary, readjust the flow rate to the desired level (remember to always disconnect from the power source before handling the pump).

### CARE & MAINTENANCE:

1. Keep the water clean – clean water will prolong the useful life of your pump.
2. Use a pre-filter on your pump if available.
3. Regular cleaning of the pump will be necessary depending upon the environment in which it is operated. Clean the pump when it is visibly soiled or when a soft cloth or brush to clean the area inside of the pump where the impeller/rotor assembly was. Clean the inlet screen, impeller housing & impeller in warm soapy water. Reassemble the pump and inspect for proper operation.
4. Before cleaning, always disconnect the pump from the power source.
5. Disassemble the pump by removing the inlet screen & the impeller housing. Remove the impeller/rotor assembly by gently pulling on the impeller blades. Use a soft cloth or brush to clean the area inside of the pump where the impeller/rotor assembly was. Clean the inlet screen, impeller housing & impeller in warm soapy water. Reassemble the pump and inspect for proper operation.

### HINTS & TROUBLESHOOTING:

1. Ensure that the pump's flow control switch is set to maximum (+) before operating. Once the flow is established, the pump can be adjusted downward to the desired level.
2. If the pump operates, but there is no flow, check to ensure the pump is fully submerged.
3. If the pump operates, but there is no flow, check the supply tubing for kinks and correct.
4. If the pump operates, but there is no flow, and if the pump is submerged and there are no kinks in the supply tubing, lift the pump from the water. Remove supply tubing at pump outlet and clean tubing inside and out if necessary. Reset pump in water (outlet side up) and once water begins to flow, re-attach the supply tubing.

### LIGHT BULB REPLACEMENT INSTRUCTIONS FOR THE SUBMERSIBLE LAMPS IN THE BASIN:

1. If the accent light bulb is burned out, turn off the power. When the light is fully cooled, twist off the plastic cover in a counter clockwise motion.
2. Remove the transparent cover, and remove the burned out bulb from the light socket. (to remove the bulb, pull straight out). Insert a new replacement bulb (NOT INCLUDED) into the light socket.
3. Replace the transparent lens cover and the plastic cover back onto the light base. Twist clockwise and lock the plastic cover into position.

### LIGHT BULB REPLACEMENT INSTRUCTIONS FOR THE ACCENT LIGHTS IN THE WATER POT:

4. If the accent light bulb is burned out, unplug the transformer from the power source. Wait a few minutes until the light is fully cool.
5. Pull the glass tube that covers the light bulb, from the receptacle by firmly grasping and twisting the tube.
6. The bulb may now be pulled from its socket and replaced with a new bulb.

### IMPORTANT SAFETY INSTRUCTIONS PERTAINING TO A RISK OF FIRE, OR INJURY TO PERSONS

**WARNING** - Lighted lamp is HOT!

Lamp gets HOT quickly! Do not touch the lens, cover or enclosure.

Unplug and allow the lamp to cool before handling the lamp.

Keep lamp away from materials that may burn.

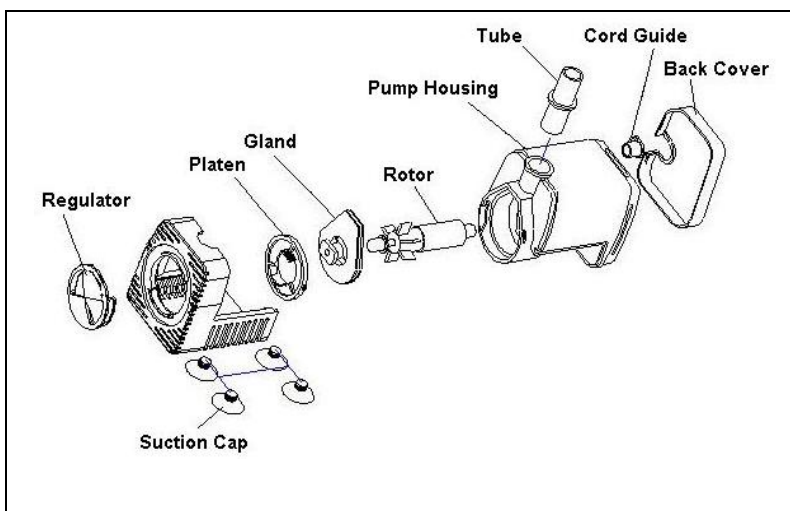
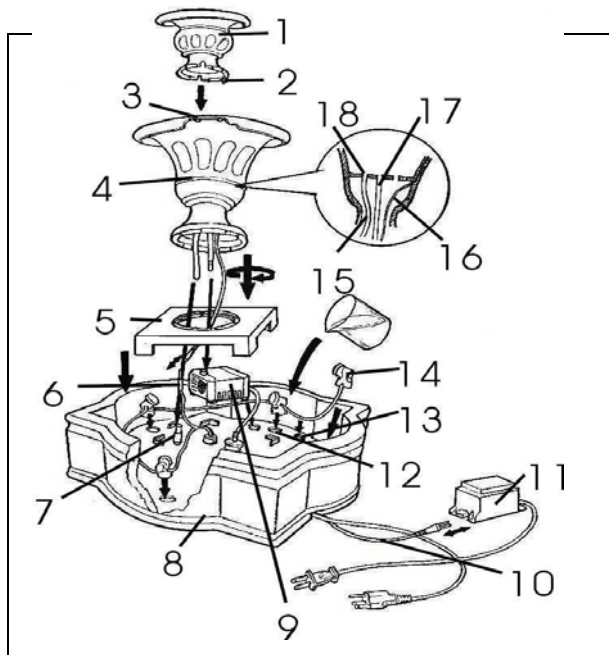
Do not touch the bulb at any time. Use a soft cloth. Oil from skin may damage lamp.

Do not operate the lamp with a missing or damaged lamp covers.

**Transformer is replaceable with model #12V42VA. Submergible light is replaceable with model #AC12V4LT-10. Pump is replaceable with model # HI-2000. Call Customer Service for replacement parts.**

### SAVE THESE INSTRUCTIONS!

Each Peaktop product may have variations in texture, finish and appearance from one unit to the next. This enhances the beauty of the product and makes your Peaktop product uniquely individual. Some products and finishes are intentionally weathered or worn in appearance for aesthetic design.



NOTE: The diagrams shown are for illustrative purposes only and are not to scale.

Ref.# DE93581

Printed in China