



**Vendor Item # ABA025AC**

Target DPCI #: 084 09 3551

**Description: White Urn Candle**

Questions, Problems, Missing Parts? Before returning to your retailer, **PLEASE CALL CUSTOMER SERVICE at (866) 728-6187**  
9am – 5pm EST, Mon – Fri or e-mail [customerservice@srg-usa.com](mailto:customerservice@srg-usa.com).

**PLEASE READ ALL INSTRUCTIONS BEFORE ASSEMBLY.**

Unpack all parts from Styrofoam and bubble wrap inside the carton to ensure there are no missing or damaged parts. If any are missing or damaged, do not attempt to assemble or use the product. Please contact customer service for replacem

**CARTON CONTENTS:**

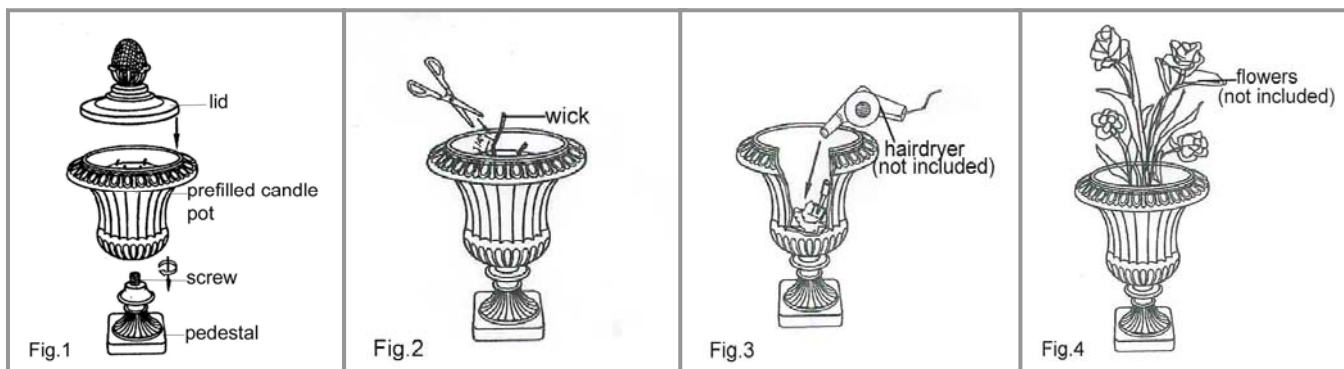
| Part# | Description          | Quantity |
|-------|----------------------|----------|
| 01.   | Lid                  | 1        |
| 02.   | Prefilled candle pot | 1        |
| 03.   | Screw                | 1        |
| 04.   | Pedestal             | 1        |

**TOOLS REQUIRED FOR ASSEMBLY:**

- No tools required

**ASSEMBLY INSTRUCTIONS:**

1. Unpack the contents of the box and check to make sure that all items are accounted for and in good condition.
2. Select a flat, level surface for the assembly and ideal location of your product.
3. Place the pedestal on the horizontal surface flat and align the screw hole of the pre-filled candle pot with the screw of the pedestal. And then turn pre-filled candle pot onto the pedestal in clockwise direction to connect them. (Cover the lid after ensuring the pre-filled candle pot and the pedestal firmly attached.) (Fig.1)
4. Remove the lid when you want to ignite the candle. Please trim all four wicks to 1/4 inch length before igniting the candle. Please snuff the candle immediately if the flame is too high. Trim the wick length and ignite the four wicks at the same time again if the flames are too high (Fig.2).
5. Allow a one hour interval must be followed after a continuous lighting lasted for 3-4 hours to cool down the melted wax.
6. When the wicks self extinguished it means the remaining wax can not be ignited. You can clean the surplus wax away and the pot can be used as planter for decoration. (Note: it is recommended to use hairdryer to heat the remaining wax to remove it.)
7. After cleaning the urn, add soil and plant with your favorite flowers and enjoy the beauty of nature. (Fig.3 & Fig.4)



NOTE: The diagrams shown are for illustrative purposes only and are not to scale.

**CAUTIONS:**

1. The candle is only to be used outdoors.
2. Be sure to make sure the candle is located in an open area. Do not put in places where fire is prohibited.
3. To avoid fire, keep away from dry substances.
4. Please extinguish the candle when no one is present to observe its performance. Place the lid over the urn when not in use..
5. This item is not a toy! Please keep away from children and pets.

**SAVE THESE INSTRUCTIONS!**

Each Peaktop product may have variations in texture, finish and appearance from one unit to the next. This enhances the beauty of the product and makes your Peaktop product uniquely individual. Some products and finishes are intentionally weathered or worn in appearance for aesthetic design.

**Ref. #DE99177**

**Printed in China**